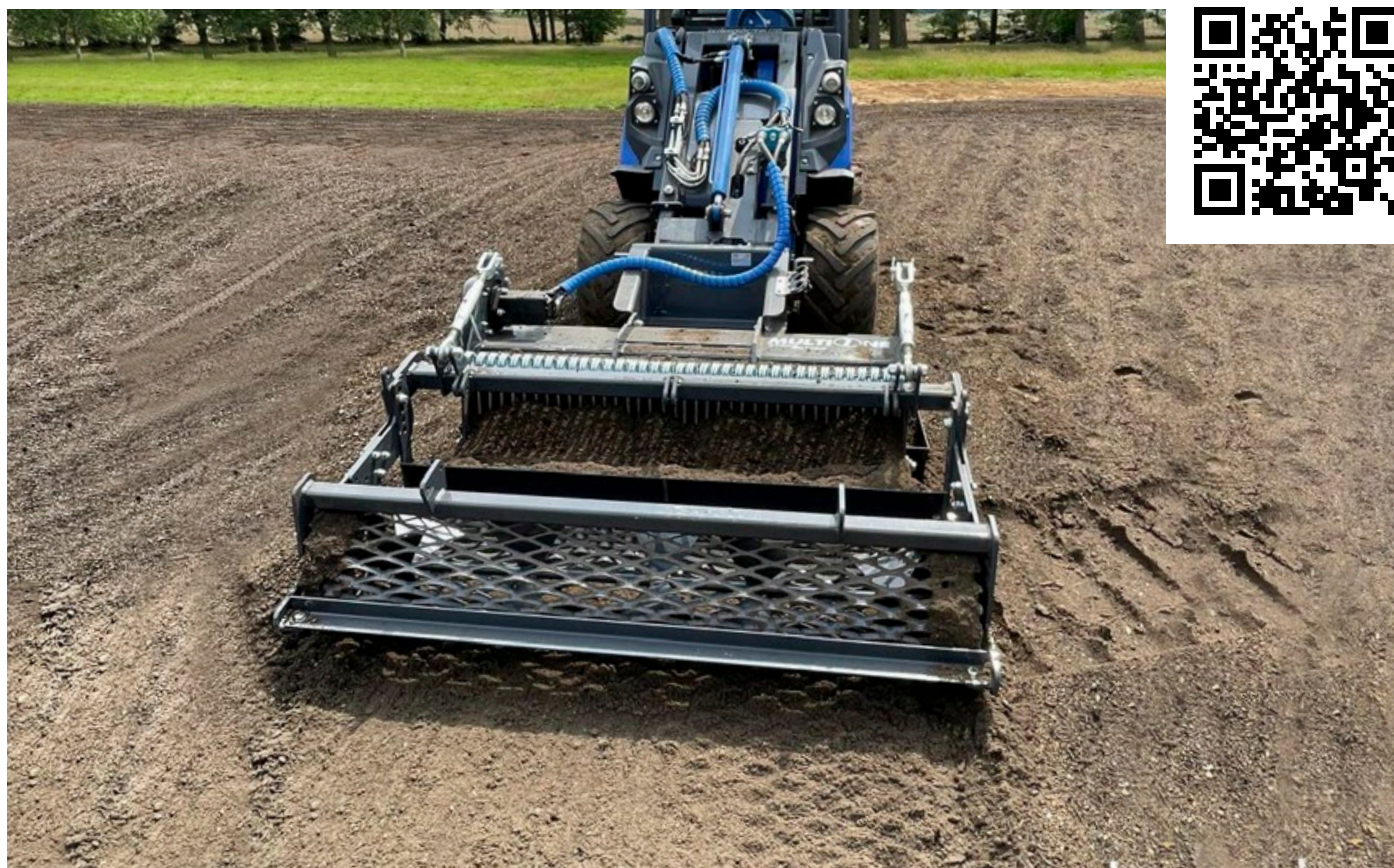


STONE BURIER

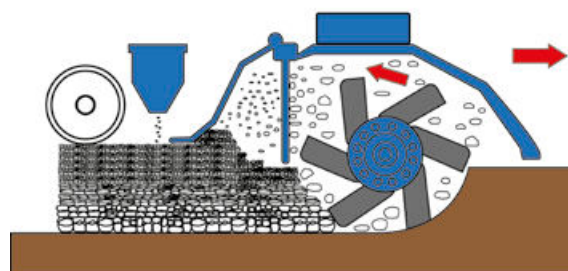
<http://tiny.cc/stoneburrier>


FEATURES & BENEFITS

- Professional, efficient stone burier
- Top grade finish in just one pass
- Can be equipped with seeding unit - ready lawn surface in a single pass

A professional hydraulic stone burier for preparation of lawn beds. The stone burier mills the soil, buries eventual stones and other objects up to 150 mm depth in a single pass, making a milled and tamped topsoil. Working depth is adjustable with the rear field roller. With the optional seeding unit you are able to make a ready lawn surface on one pass. Stone burier is most commonly used when the topsoil needs to be milled thoroughly.

Note: the floating boom valve on the machine is suggested.



Model	Working width	Working depth	Blades	Weight	Code
114 w/roller	114 cm (44.9 in)	0 - 15 cm (0- 6 in)	36	298 kg (657 lbs)	C890523
132 w/roller	132 cm (52 in)	0 - 15 cm (0- 6 in)	42	335 kg (739 lbs)	C890524
150 w/roller	150 cm (59 in)	0 - 15 cm (0- 6 in)	48	380 kg (838 lbs)	C890525
Options					
Seeding unit for stoneburier 114				70 kg (154 lbs)	C890529
Seeding unit for stoneburier 132				76 kg (167 lbs)	C890530
Seeding unit for stoneburier 150				90 kg (198 lbs)	C890531

Compatibility	1.1	2.3	4.2	5.2	5.3	6.3	7.2	8.4	8.5	11.6	11.9	EZ5	EZ7 EZ8
Model													
114 w/roller													
132 w/roller													
150 w/roller													

Very compatible

Compatible

Not compatible